

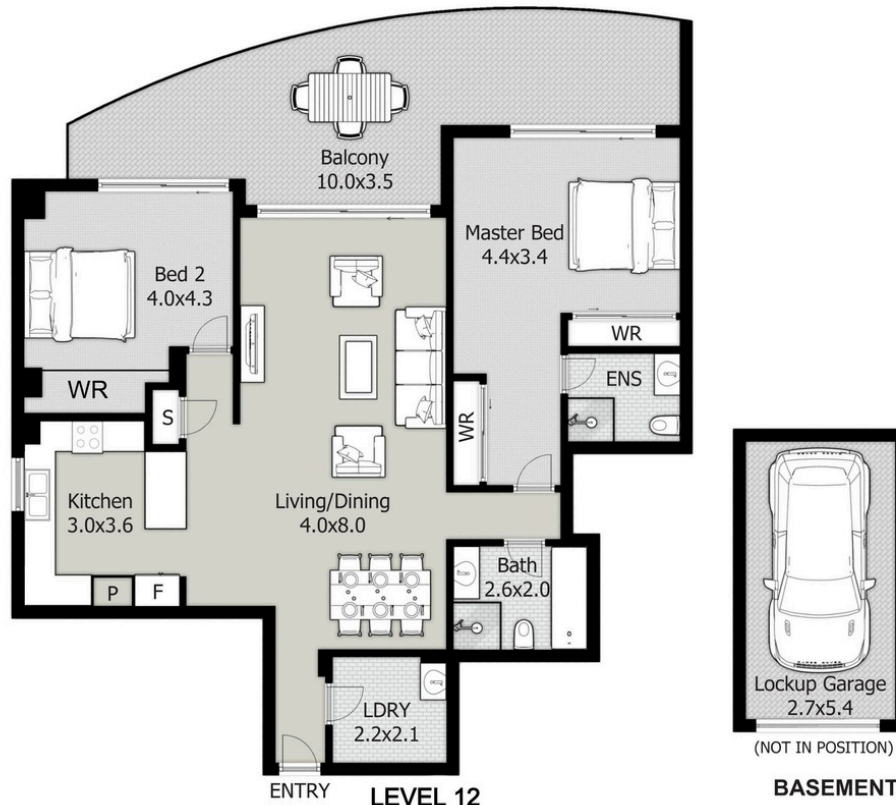
**1201/91b  
Bridge Road  
Westmead**



**TEAM TARIQ**  

---

**McGrath**



**DISCLAIMER:**

This floor plan is used for marketing purpose only and is subject to errors and inaccuracy. The marketing Agent will not accept any liability. Interested parties should make and rely on their own enquiries.

**North-East facing large 2 bedroom 2 bathroom sun-drenched apartment & balcony facing the tennis court - Level 12**

The view from the balcony is simply breathtaking. One of the largest two-bedroom apartments in the prestigious Monarco Estate, this 142 sqm north-facing home features a spacious combined living and dining area with split-system air conditioning. Its centrally located in the prestigious Darcy Road school catchment, a 10-minute walk from Westmead Hospital, Coles, shops, Westmead Public School, Wentworthville Station and Westmead Station. Short walk from proposed light train station and Western Sydney Metro Station. Two-minute walk to the bus stop. This apartment comes with a single car lock-up garage.

**2 Bed 2 Bath 1 Car  
142 sqm**

**For Sale  
By Negotiation**

**WELCOME  
As Advertised**

**AGENT**  
Tariq Jameel  
0421 250 566  
tariqjameel@mcgrath.com.au